



5  
2  
0  
2

A Professional & Trustworthy  
**X-Ray Machine**

**PRODUCT**

**CATALOG**

Fatali Medical Technology Foshan Co., Ltd

## Fatali Medical Technology Foshan Co., Ltd

☎ 0086-18125786345

✉ [ysftal@fatal.com.cn](mailto:ysftal@fatal.com.cn)

☎ 0086-18125786345

🌐 <https://fatal-med.com>

📍 Building B,Guangdong Bio-Pharmaceutical Industry park,Xianxi Section,321 Rd,  
Shishan,Nanhai,Foshan Guangdong Province,China



WhatsApp



Wechat +Email

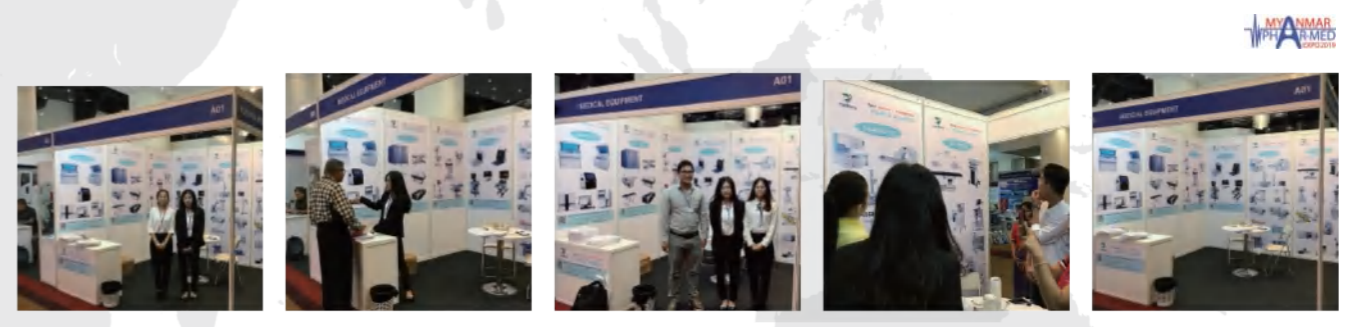
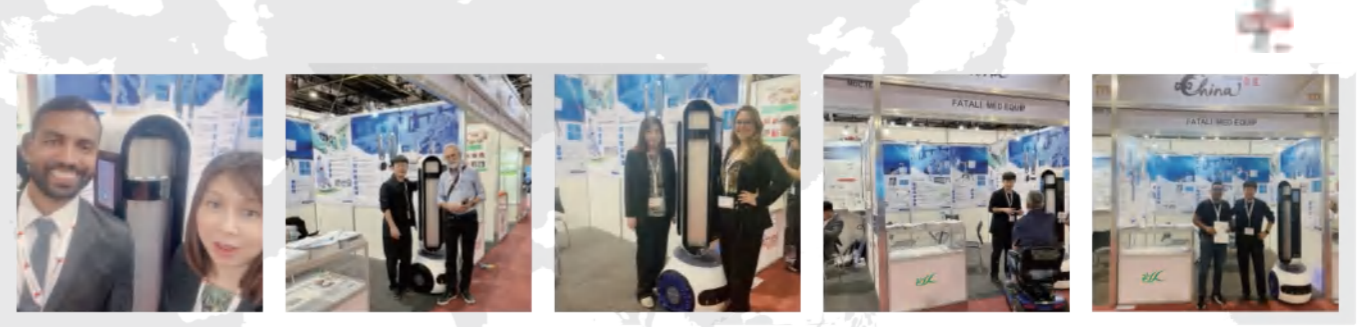
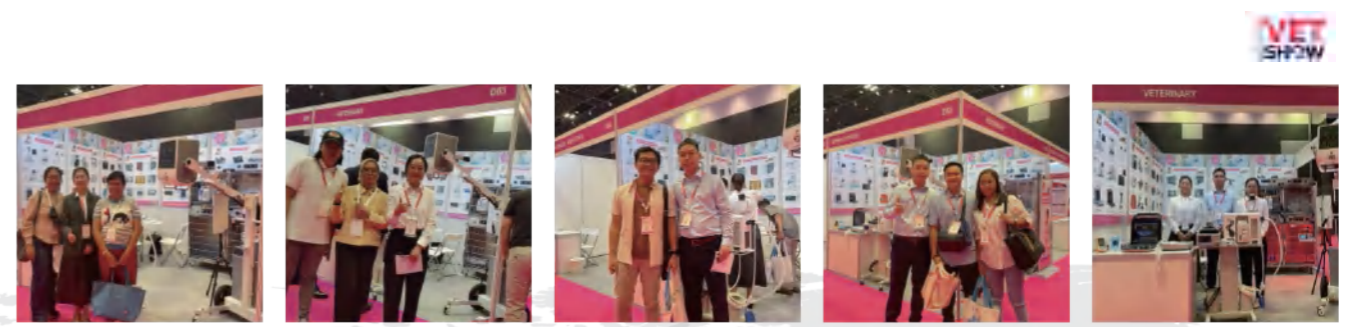
## About us

Fatali Medical Technology Foshan Co., Ltd is a leading manufacturer of medical equipment in China. Compounded with the R&D and sale of medical device, especially in the field of medical x-ray machine. We are not only manufacturer of medical equipment but also professional on providing one-stop solution of hospital project, clinic project, Education University, laboratory, government tender as well as distributors. Based on mutual trust & good service, our mission is to provide the most cost-effective medical equipment for hospitals and clinics around the world.

In 2006, we exported 125 sets of medical x-ray machine to Congo at one time, setting a record of exporting medical x-ray machine to foreign countries. In 2008, the same customer ordered another 150 x-ray units and 800 sets of surgical instruments. With more than 20 years of experience, our products have been exported to more than 160 countries and have obtained good reputations because of our competitive price, high quality products and excellent service.

Fatali insists on the idea of "Reputation First, Customers Foremost", which is the aim of our after-sale service. We have established a good after-sale service team, providing powerful backup force to our customers. In recent years, we have been granted the "Nationwide Medical Device After-sale Service Advanced Unit". If you are interested in our products and would like to discuss more details of your request, please contact us freely. Welcome to know more about Fatali and our x ray machines.







UV-C Warrior Disinfection Robot



X-Ray Machine



Medical Positioner



Lab Bioimager

## Product Series:

We currently have four categories of products, including UV-C disinfection robot, X-ray Machine, Lab bioImager, Medical Positioner, and X-ray accessories. Our products have been widely used in hospitals, clinics, and other healthcare facilities globally. All of the products are complied with international standards by strict manufacturing system control, delivering the most accurate diagnostic outcome for the users.



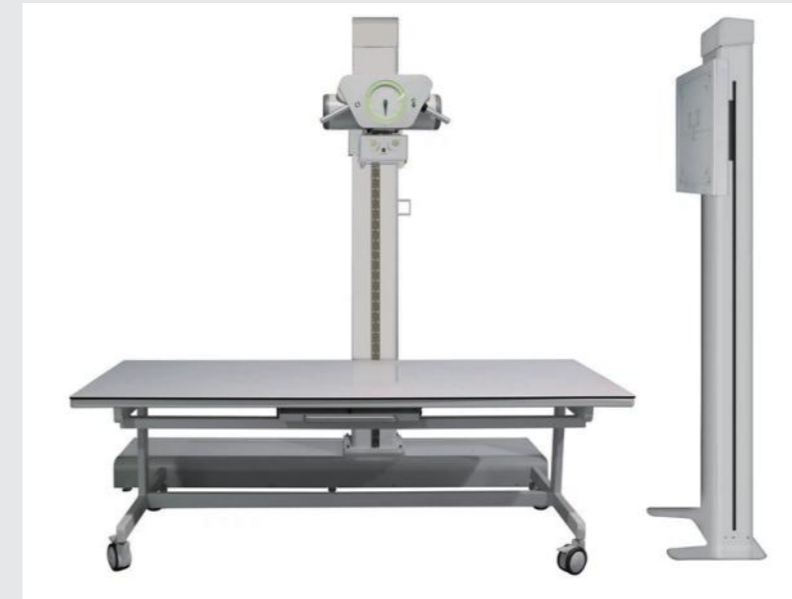
## 5.6KW Portable X-Ray Machine



5.6KW Portable X-ray machine equipment is an X-ray unit, and its smaller size is more flexible than a fixed one, can be moved anywhere, anytime. This X-ray machine equipment allows radiographers, vets, and dental professionals to take X-ray images of patients without calling them into a special lead-lined room.

### Parameters:

Product Model	FTLF056
Product description/Type	Portable Combined High Frequency X-ray
Working frequency	80-200kHz
Input	
Mains phase/Voltage	100-240VAC/48VDC
Frequency	50Hz/60Hz
Nominal/Max Power	5.6KW/5.6KW
KV Range	40-125KV
KV Rising Time	≤1ms@100KV(10%-90%)
Accuracy of KV	+5%
Output Max mA	100mA
Accuracy of Tube Current	±5%+1mA)@210ms ±20%<10ms
mAs Range Non-AEC	0.1-320mAs
Accuracy of mAs	±(5%+0.2mAs)@>5ms ±10%+0.2mAs)@<5ms
Exposure Time Range	2ms-10000ms
Accuracy Exposure Time	±(2%+0.2ms)@>5ms ±(5%+1ms)@<5ms
Normal Focal Spot Size	0.6mm/1.8mm
MBK parameters Max Anode Heat Storage	20kJ
Anode Disk Target Angle	15
Communication	RS232/WIFI
Certificate CE/Registration Certificate	S013485
Size	390*250*200(mm*mm*mm)
Appearance	



## 5.6KW Portable X-Ray Machine

5.6KW Portable X-ray machine equipment is an X-ray unit, and its smaller size is more flexible than a fixed one, can be moved anywhere, anytime. This X-ray machine equipment allows radiographers, vets, and dental professionals to take X-ray images of patients without calling them into a special lead-lined room.

### Parameters:

Product Model	FTLF035-A	FTLF040-A	FTLF056-A
Product description/Type		Portable Combined High Frequency X-ray	Source
Working frequency		80~200kHz	
Input			
Mains phase/Voltage		100-240VAC/48VDC	
Frequency		50Hz/60Hz	
Nominal/Max Power	3.5KW/3.5KW	4KW/4KW	5.6KW/5.6KW
KV Range		40~125KV	
KV Rising Time		≤1ms@100KV(10%-90%)	
Accuracy of KV		+5%	
Output Max mA	40mA	80mA	100mA
Accuracy of Tube Current		±5%+1mA)@210ms ±20%@<10ms	
mAs Range Non-AEC	0.1~250mAs	0.1-320mAs	0.1~320mAs
Accuracy of mAs		±(5%+0.2mAs)@>5ms ±10%+0.2mAs)@<5ms	
Exposure Time Range		2ms-10000ms	
Accuracy Exposure Time		±(2%+0.2ms)@>5ms ±(5%+1ms)@<5ms	
Norminal Focal Spot Size	1.2mm	0.6mm/1.5mm	0.6mm/1.8mm
MBK parameters Max Anode Heat Storage		20kJ	
Anode Disk Target Angle	16	12	15
Communication		RS232/WIFI	
Certificate CE/Registration Certificate		S013485	
Size		390*250*200(mm*mm*mm)	
Appearance			

## High Frequency DR 32KW Manual X Ray Machine

Power voltage: 1-phase 220VAC ±10%, 50Hz, 16A; 3-phase 380VAC± 10%  
 Maximum Working Frequency: ≥30KHz  
 Nominal Electric Power: 32kw (@100kv, 320mA, 100ms)  
 KV range: 40~125KV

### Parameters:

Generator	
Power voltage	1-phase 220VAC ±10%, 50Hz, 16A; 3-phase 380VAC± 10%
Maximum Working Frequency	≥30KHz
Nominal Electric Power	32kw (@100kv, 320mA, 100ms)
KV Range	40~125KV
mA range	10~400mA
mAs range	0.1-500mAs
Filming Bed	
Bed size	ength 2000mm*Width 703mm* Height 695mm (Castor height 150mm)
From Left to right movement distance of the tray under the bed	1065mm
X-ray tube ground track size	Length 2100*445*135mm
X-ray tube pillar size	Height 2085 * 260 * 220mm (a height of 2255mm after installation)
The Movement distance toward the front or back direction	1700mm
X-ray tube stand arm	Length 615mm
	The highest distance from the ground
	The lowest distance from the ground: 460mm
	The movement distance from up and down: 1350mm
Chest X-Ray Holder	
Holder size	Height 2055mm* Width 205mm* thickness 185mm
Chest X-ray box	Width 570mm*580mm
The highest distance from centre position to the ground	1730mm
The lowest distance from centre position to the ground	440mm
The distance of up and down movement	1290mm
Flat Panel Detectors	
Detector Technology	a-Si Scintillator: Csl
Image Size	43x43 cm
Pixel Matrix	3072x3072 (17x17 in) Pixel Pitch: 140 um
A/D Conversion	16 bit
Minimum Detectable Dose	14 nGy Maximum Linear Dose (RQA5): 110 uGy Spatial Resolution: 3.6 LP/mm
Data Interface	GigE /802.11ac
Power Dissipation	20 W
Adapter Input	AC 100-240V50-60Hz
Dimensions	46x46x1.5 cm



## 5.6KW Veterinary X-Ray Machine

The X-ray machine aids in diagnosing and treating various animal illnesses and injuries, which is a vital tool for veterinarians, allowing them to view the internal structures and organs of animals, such as bones, lungs, and abdominal organs.

### Parameters:

Model/Parameter	FTLF056V-B		
Total power	5.6KW		
Supply voltage	220V		
Power requirements	220V/50Hz (Wire diameter>4mm <sup>2</sup> .Internal resistance<0.50		
mA	132-100 mA		
mAs	0.32-315mAs Stepping R'10/ 0.4mAs		
Exposure time	40-110kV Stepping 1KV		
Focus size	0.01-6.3s		
Heat capacity	1.8*1.8mm Dual focus		
Generator frequency	42KHU		
Exposure method	30Khz		
Table floating range	1.2m	Horizontal movement range	0~114mm
		Vertical movement range	0~125mm
	1.4m	Horizontal movement range	0~220mm
		Vertical movement range	0-125mm



## 20/32KW Veterinary X-Ray Machine

Our Veterinary X-ray filming bed is suitable for all main kinds of examinations in the small animal veterinary field. The system is completed with either a 20 kW or 32 kW X-ray generator. The low absorption laminated table top floats in four directions and is equipped with a pair of mechanical breaks with pedal release. The device is intended for use in general projection radio-graphic applications wherever conventional screen-film, CR or DR systems may be used.

### Parameters:

Generator	
Power voltage	1-phase 220VAC±10%,50Hz16A:3-phase 380VAC±10%
Maximum Working Frequency	≥30KHz
Nominal Electric Power	20kw(@100k200mA100ms)
KV range	40-125KV
mA range	10-320mA
mAs range	0.1-400mAs
Photo form time	3ms-6300ms
X-Ray Tube	
Working voltage	40KV-125KV
Maximum power (0.1 S)	Small focus 20 kw, Large focus 40 kW
Nominal value	Large focus 1.2 Small focus 0.6
Maximum heating filament characteristics	5.3A
Anode speed (50HZ)	2800rpm
Anode angle	2
Inherent filtering	1.0mmAL/75kV
Anode Heat Content	110KJ(150KHU)
Tube component heat capacity	900KJ(1300KHU)



## Automatic X-Ray Machine

Fully automatic design, convenience for doctors, Modularization design, 1 meter, 1.5 meters, and 1.8 meters positioning of infrared detection. The chest film holder and X-ray tube work synchronously ensure that is in the same horizontal position.

### Parameters:

Bed	
Bed Size	
The Movement distance of bed surface broad toward the left or right direction	Length2000*Width703 * Height688mm
The Movement distance of bed surface broad toward the front or back direction	±37mm
The Left and right movement distance of the tray under the bed	±8mm
X-ray tube ground track size	460mm
X-ray tube pillar size	length2100*470*135mm
The Movement distance toward the left or right direction	height1945 * 250* 254mm (a height of 2106mm after installation)
X-ray tube rack arm	1300mm
Length	
The highest distance from the ground	635mm
The lowest distance from the ground	2155mm
the movement distance from up and down	1145mm
Chest X-ray holder	
Chest X-ray holder size	990mm
Chest X-ray box size	Height 2100mm* Width 205mm* thickness 185mmwidth 570mm*580mm
The highest distance from centre position to the ground	1590mm
The lowest distance from centre position to the ground	720mm
The distance of up and down movement	870mm



## Floor-Mounted Machine

Classic & modern design, one-bed side operation, eliminating the need for ground rail installation. Integrated design, small footprint, low requirements for installation and computer room. Infrared induction, permanent magnet circuit design, effectively reduce noise and prevent mechanical failures caused by sudden power outages.

### Parameters:

Xray bed	
Bed body size	Length2090* Width800* Height6458mm
The Movement distance of bed surface broad toward the left or right direction	±430mm
The Movement distance of bed surface broad toward the front or back direction	±107mm
The Left and right movement distance of the tray under the bed	460mm
Pillar above the bed	
X-ray tube pillar size	Height2130*230*150mm
The Movement distance toward the left or right direction	1380mm
X-ray tube rack arm	
Length	
The highest distance from the ground	1700mm
The lowest distance from the ground	460mm
The movement distance from up and down	990mm
Chest X-ray holder	
Holder size	Height 2060* Width 260* thickness 220mm
Chest X-ray box	width 535mm*540mm
The highest distance from centre position to the ground	1610mm
The lowest distance from centre position to the ground	575mm
The distance of up and down movement	1035mm





## 15KW Mobile Digital C-arm Imaging System

Widely use in operating room, X-ray department, emergency room, intervention and peripheral angiography. General surgery ,urology, chest surgery,trauma, spine surgery, abdominal surgery, orthopedics, bone reduction and fixation, endoscopy and surgery. Intervertebral discangiograp-hy and angioplasty.



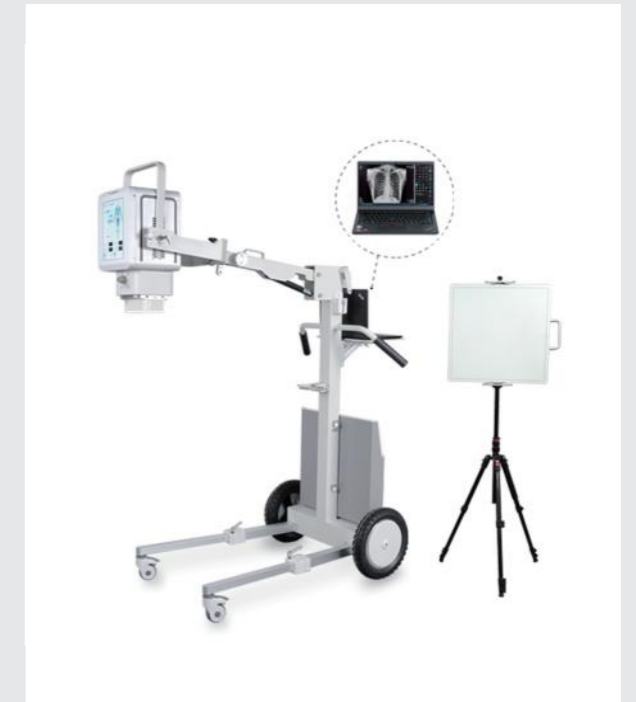
### Parameters :

Model	FTL 715	
System Requirements		
Electric source (V)	AC 220	
Power (kW)	15	
Flat Panel Detector		
Type	Mercur1212X	
Spatial Resolution (lp/mm)	3.3	
Pixel Matrix ( pixels)	2048 x 2048	
Pixel Pitch (μm)	150	
Removable grid	Yes	
Active area (mm)	307.2 x 307.2	
Data Interface	10G Ethernet	
Generator		
KV range (kV)	Spot / Pulse 40 ~125	
	Continuity 40 ~110	
	Continuous:6.3	
mA range (mA)	Pulsed :32	
	Digital spot:150	
ms range (ms)	10~1600	
Mas range (mAs)	0.2-100	
X-ray Tube		
Type	Rotating	
Focal spots ( mm)	0.3/0.6	
C-arm		
SID ( mm)	1080	
Free space in arc ( mm)	884	
Depth in arc ( mm)	708	
Orbital rotation (°)	150 (117/-33)	
Lateral rotation (°)	450 (±225)	
Wig/wag (°)	±15	
Horizontal travel ( mm)	200	
Vertical travel ( mm)	400	



## 5.6KW Digital Portable X-Ray Machine

The Portable X-Ray Machine provides high power, state of the art technology, system reliability, and low maintenance all in a small footprint, lightweight package. Delivering the maximum mR/mAs, and provides hospital quality imaging performed anywhere, anytime, which can reduce exposure times on difficult radio-graphic anatomical views, thereby minimizing patient motion problems and enhancing image quality.



X-ray holder

Strongly fix the X-ray machine shooting direction, and be able to rotated 180°



Movable pulley

Available to be fixed in one spot accurately make the shooting position



X-ray arm lock

Unlock X-ray arm to be adjusted up and down



Stand Leg holder

Stand leg can be stretched by length



X-ray arm holder

Hold the X-ray arm when it is folded



Notebook holder

Combined at the back of X-ray machine

### Parameters :

Model /Parameter	FTLF056DRV-A	
Total power	5.6KW	
Supply voltage	220V	
Power requirements	220V/50Hz ( Wire diameter>4mm <sup>2</sup> . Internal resistance<0.50)	
mA	32-100 mA	
mAs	0.32-315mAs Stepping R'10/ 0.4mAs	
KV	40-110KV Stepping 1KV	
Exposure time	0.01~6.3s	
Focus size	1.8*1.8mm Dual focus	
Heat capacity	42KHU	
Generator frequency	30Khz	
Exposure method	Hand brake, touch screen, remote control	
Tablet model	3543A	4343A
maging area	14*17inch	17*17inch
Pixel size	140um	
A/D conversion	16bits	
Spatial resolution	3.6lp/mm	
Software	Special Medical Software	
Computer Contiguration	R3-4300U CPU4G DDR 256G SSD	
Logo	Starting up logo is costumized	



## 20kw/32kw Mobile X-ray Photography System



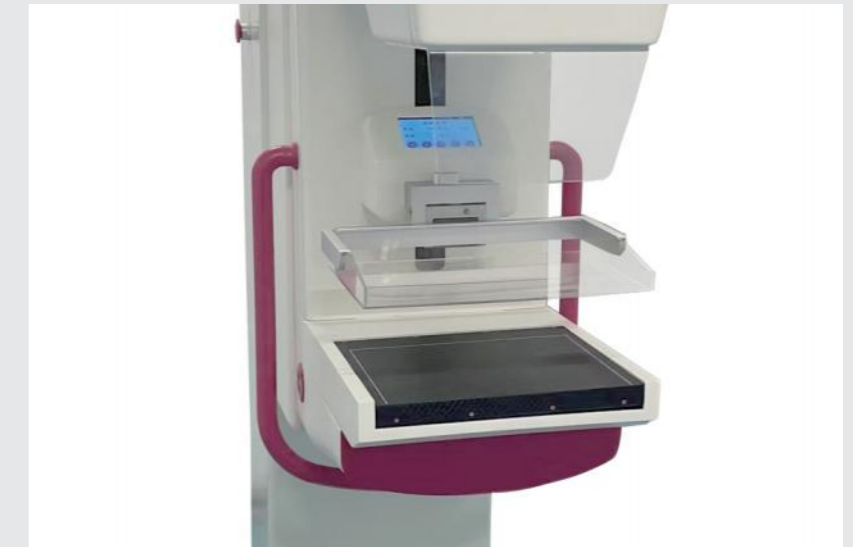
In the limited space beside the bed, to ensure precise positioning operation, engineers design a unique double arm for you, which can move up and down automatically and safely. The light and simple shape solves the problem that you are difficult to move in narrow space, such as between hospital beds, staircase ramps, crowded corridors and elevators. Achieving sharp images through short time photography with high power and small focus.

### Parameters

Parameters/KW	20KW	32KW
Supply voltage	220V±10% single phase	220V±10% single phase
Total power	4KVA	4KVA
Power source	Capacitive energy storage	Capacitive energy storage
Main inverter frequency	70kHz-250KHz	70kHz-250KHz
Filament frequency	≥20kHz	≥20kHz
Focus	0.6-1.2mm	0.6-1.2mm
Total power	20kW	32KW
Kv	40~120kV	40~125kV
mAs range	1-200ms	1-320ms
Heat capacity	1056kHU	1056kHU
Monitor	19 inch touch screen	19 inch touch screen
Hard disk	500G	500G
Memory	8G	8G
CPU	4 cores 2.7G	4 cores 2.7G



## Digital Breast X-Ray Machine



Molybdenum target X-ray machine, is mainly used for X-ray examination of female breasts. It is the basic breast examination and diagnostic equipment in gynecology departments and specialized hospitals. It can detect lumps and tiny calcifications in breast tissue in time. It can also be used for the photography of non-metallic foreign bodies and other soft tissues such as hemangiomas.

Breast Specific Mammography X-Ray Tube	
The Italian IAE company XM-15	XM-15
Focus	0.1mm/0.3mm
Anode heat capacity	300 KHU
Nominal tube voltage	60kV

High frequency and high pressure generator	
High voltage cable	9m
Total power	5kw
Kv	20~40KV
mA	10~160mA
Exposure time	50ms ~ 10s

Digital imaging workstation	
Breast flat-panel detector	
Matrix	4K x 3K
Pixel size	80um
Visual field	31 x 23cm
A/D Conversion	14 bits
Resolution	6LP / mm

Stand frame	
Focus-probe surface distance (SID)	65cm
Comper:	245mm long, 185mm wide; travel greater than 260mm; pressure range 0~20kg
C-shaped arm vertical movement rang 550mm	
C-arm rotation angle: -175°- +180°, electric rotation, locking	



## Digital Gastrointestinal Machine



The digital X-ray fluoroscopy photography system adopts a gastrointestinal machine structure, which is ingeniously designed, functionally reasonable, flexible in motion, easy to operate, highly efficient, adaptable, and has clear images. Patient information can be digitally stored, played back, and imaged, and the imaging speed can be adjusted according to different examination sites to dynamically observe whether organ physiological movements have changed, greatly improving diagnostic accuracy and reducing misdiagnosis and missed diagnosis rates.

X-ray tube FTL-14	
Focus	0.6mm/1.2mm
Total power	65 Kw
Nominal tube voltage	150kV
Anode heat capacity	300 KHU

High frequency and high pressure generator FTL-65F	
High voltage cable	12m
Rated power	65kw
Inverse frequency	150KHz
Voltage	Kv: 40kV~150kV Perspective: 40kV~125kV
Current	photography: 10 mA ~ 800 mA Perspective: 0.5mA~6.0mA Pulse fluoroscopy: 10 mA ~ 40 mA
Exposure time	0.01s~6.3s
mAs range	0.1 mAs~ 800 mAs
Automatic diagnosis system, ball tube overload protection Operation interface, digital display: KVp, mA, exposure time, and mAs X line exposure hand brake	



## UV Warrior Disinfection Robot

UV-C Warrior Disinfection Robot is a revolutionary innovation to disinfect and sanitize our environment, which installs with state-of-the-art ultraviolet light in the range of 254 nm to eliminate harmful pathogens, viruses, bacteria, and other microbes with standard decontamination procedures with concurrent reduction of time and workload and protect human to be healthy. The UV-C disinfection robot offers safe, efficient, and cost-effective disinfection for our hospitals, schools, offices, hotels, airports, and other public places.

### Parameters:

Operation system	Disinfection System 1.0
Languages	Chinese, English
Tube power	9W/30W
Battery life	2hrs
Max speed	(Auto) 0.7m/s; (Manual) 1.4m/s; Speed adjustable
uv-c lamp lifespan	40,000hrs
Charging time	4hrs
Touch screen size	7 inch
Disinfection type	fungi, bacteria, germs
uvC wave length	254nm
Languages	Chinese; English
Passability	51.5cm Width
Disinfection time	95.70%
Laser radar range	25~40m
Charging requirement	220-240 VAC
Safety	Software & sensors based emergency stop button
uvc lamp tubes	20
Connectivity	Wireless (Wi-Fi based)
Battery type	Lithium battery
Tube length	894.6mm/331.5MM
Disinfection coverage	360
Total weight	62kg
Dimensions (L*WH)	594*476*1780mm



## Multiple accessories



5.6KW Portable X-ray Machine



5.6KW Portable X-ray Machine



Floor-mounted X-ray Machine



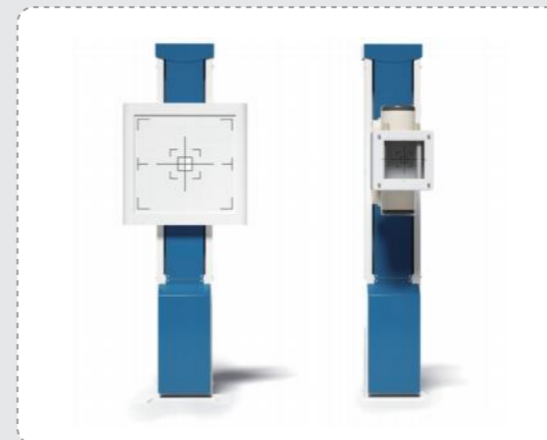
V1717X Panel Detector



20KW & 32KW Veterinary X-ray Machine



Simple Veterinary X-ray Filming Table



X-ray Detector Stand For Vehicle



4343Z Panel Detector



Manual X-ray Machine



Automatic X-ray Machine



M1717V Panel Detector



3543Z Panel Detector



## Rehabilitation Medical Positioner

This positioner uses proprietary vacuum technology to hug and secure patients to the correct position. When the positioner is activated with suction, millions of flexible beads will conform to the contours of the animal's anatomy providing a high degree of precision and security. The surface material is designed to prevent conduction, convective, and radiant patient heat loss. It is also comfortable to resist pressure sores.

### Parameters:

The Size Of Rehabilitation Medical Beanbag Positioner
23*30cm
140*100cm
30*40cm
40*70cm
55*85cm
60*80cm
90*100cm
40*50cm
50*70cm
50*55cm
50*80cm
140*85cm
45*90cm



## Radiotherapy Medical Positioner

High accurate, multi-functional and user-friendly for SBRT patient setups with low ray attenuation. Filled with Polystyrene plastic beans, vacuum the air to be adjusted and locked quickly as the treatment posture of the patient. The Positioner can be reused, which adjustable to fit all patients that is constructed of strong and pliable polyurethane bags to reinforce the shape exactly setup by patients' body shape.



### Parameters:

The Size Of Surgical Medical Beanbag Positioner
51*73cm
80*18*18cm
45*90cm
95*108cm
30*40cm
45*90cm
75*100cm
100*125cm

## Surgical Medical Positioner

Vacuum filled Medical beanbag Positioner is regularly used to stabilize a patient's position on the operating table, which offers a range of shapes and sizes from full body to head stabilizers.



### Parameters:

The Size Of Surgical Medical Beanbag Positioner
51*73cm
80*18*18cm
45*90cm
95*108cm
30*40cm
45*90cm
75*100cm
100*125cm



## Our service

Our professional sales team graduated from medical university, familiar with medical professional theories. To provide the best service to our customers, all of our sales have trained for our product professional knowledge, exporting knowledge with a patient attitude and friendly manner to enhance the cooperation process for both parties.

All of our medical devices are compliance with safety and quality standards, and strictly implement a Quality Management System for medical device manufacturing, that we manufacture well-manufactured, accurate, and reliable devices, making significant and precise diagnoses and treatment outcomes. However, we would provide 24/7 service for our global customers, if it has any quality issues, the customers can get a quick response via our customer service system.

As our business partner to be our distributor, it would not only offer you the most favorable price and satisfied service but also marketing support for your target market. Thus, we will help you to expand brand awareness in your market with our marketing reports, the promoting message would be communicated through various marketing channels, such as social media, website, email marketing, and advertising. Besides, it would also be free to provide you with some promotional materials and organize the international exhibition for assisting you to sell medical devices.



## Looking forward to your cooperation

We sincerely invite you to be our FALYL Medical device distributor, which comes with numerous benefits and low capital investment for you, cause we are the first-hand original medical equipment manufacturer. You can flexibly choose appropriate medical devices for your favorable market and increase your profit margin. Moreover, we also provide various supports and services for you, for instance, the marketing support is to help you expand your business; the technical support is to solve the device installation; the delivery service is to keep your purchased medical product to be delivered on time and safely; the after-sale service you can get the quick response anytime for all aspects of the business. Therefore, to be our distributor would be a beautiful beginning of your business, let us discuss the cooperation.

Fatali Medical Technology (Foshan) Co., Ltd